

HOLLAND CHARTER TOWNSHIP

**PETITION FOR LOCATING, ESTABLISHING
AND CONSTRUCTING A DRAIN**

VAN OMMEN DRAIN

To the Ottawa County Water Resources Commissioner:

The undersigned is Holland Charter Township, Ottawa County, Michigan. This petition has been duly authorized by the governing body of Holland Charter Township and requests that the Van Ommen Drain be located, established and constructed under the provisions of Chapter 4 of Public Act 40 of 1956, as amended, to alleviate drainage issues in the Drainage District.

The proposed drain is located in Holland Charter Township, Ottawa County, Michigan.

The proposed drain is necessary for the public health, convenience or welfare and benefits the public health in Holland Charter Township.

Holland Charter Township understands that it will be liable for an assessment at-large against it for a percentage of the cost of the proposed drain.

The tentative location of the proposed Van Ommen Drain is as described in *Exhibit A*.

Dated: _____, 20____

By: Russell TeSlaa
Its: Supervisor

By: Michael Dalman
Its: Clerk

PETITION FOR LOCATING, ESTABLISHING, AND CONSTRUCTING A DRAIN

EXHIBIT A: TENTATIVE LOCATION OF PROPOSED VAN OMMEN DRAIN

(Section 16 of Holland Charter Township, Ottawa County, Michigan)

See attached GIS exhibit "Petition for Locating, Establishing, and Constructing a Drain Exhibit A: Tent. Location of Prop. Van Ommen Drain". (total 1 sheet)

Beginning on the south half corner of section 16; thence S89°15'48"E 1602.27 feet along the south section line of section 16; thence N00°42'53"E 710.89 feet parallel to the N/S 1/2 corner line of section 16 to the point of beginning 'A'; thence a 30" storm sewer running S89°38'40"E 270 feet; thence a 30" storm sewer running S00°17'36"W 125 feet; thence a 30" storm sewer running S89°30'47"E 305 feet; thence a 30" storm sewer running S89°42'11"E 250 feet to point 'B'; thence a 18" storm sewer running N16°55'48"W 372.32 feet to point 'C'.

Also beginning at point B a 12" storm sewer S17°11'53"E 284 feet to point 'D'.

Also beginning at point B a 12" storm sewer N76°16'06"E 33.88 feet to point of ending 'E'.

Also beginning at point C a 12" storm sewer S63°13'17"W 13 feet to the point of ending 'F'.

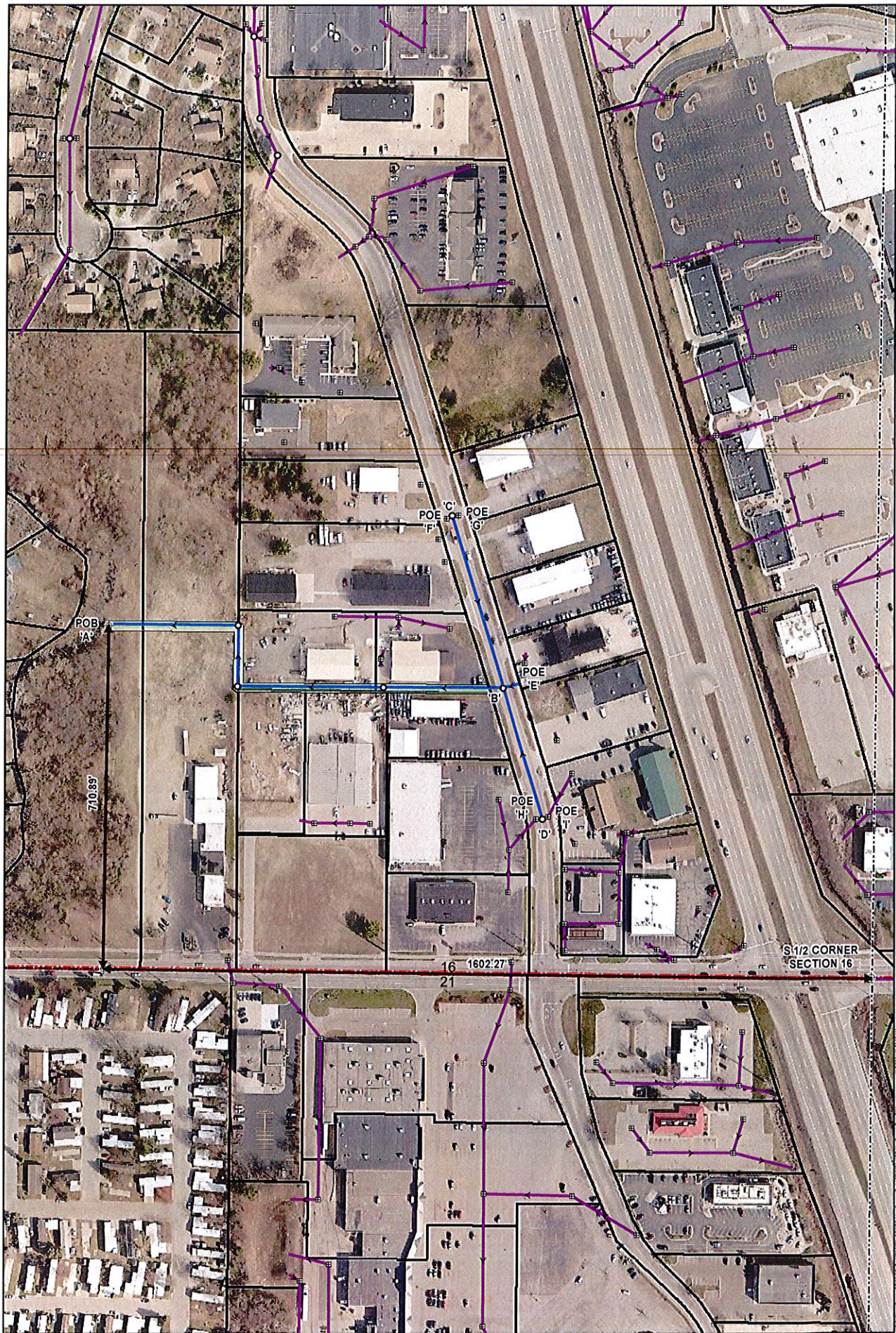
Also beginning at point C a 12" storm sewer N85°48'52"E 13.38 feet to point of ending 'G'.

Also beginning at point D a 12" storm sewer N87°32'29"W 14.36 feet to point of ending 'H'.

Also beginning at point D a 12" storm sewer N64°57'53"E 12.48 feet to point of ending 'I'.

Distance of county storm sewer by pipe size is as follows: 373 feet of 12" storm sewer, 373 feet of 18" storm sewer, and 950 feet of 30" storm sewer. The total length of county storm sewer is 1696 feet.

This description was generated using the as-mapped storm sewer from ArcGIS. Actual locations of the route and course have not been field verified with GPS.



LEGEND

- ➔ VAN OMMEN DRAIN STORM SEWER
- ➔ STORM SEWER
- ➔ OTHER WATER COURSES
- ⊞ CATCH BASIN
- MANHOLE
- EASEMENT
- ⌚ SECTION BOUNDARY
- RIGHT OF WAY


 SCALE: 1" = 175'

OTTAWA COUNTY WATER RESOURCES COMMISSIONER
 HOLLAND CHARTER TOWNSHIP
 SECTION 16
PETITION FOR LOCATING, ESTABLISHING, AND CONSTRUCTING A DRAIN
EXHIBIT A: TENT. LOCATION OF PROP. VAN OMMEN DRAIN
 Prein&Newhof
2006