

## KEY:

White = Safe, navigable waters

**Light Blue** = Caution, shallow water – do not speed in unfamiliar waters

**Red** = No Wake Zones

No wake zones are strictly enforced and no vessel shall exceed the slow-no-wake speed within any red, highlighted area. Please be respectful of the shoreline and marina areas.

**Green** = Any vessel 26 feet or more in length shall not exceed the slow-no-wake zone speed.

**Yellow** = Pine Creek Bay Special Instructions:  
No high-speed boating between 7:30 pm – 11:00 am.  
“For the purpose of this Ordinance, ‘high speed’ shall mean a speed at or above which a motorboat reaches a planing condition.”

No towing. For example, a person on water skis, water sled, surfboard or other similar objects.

## WHO MAY OPERATE A BOAT

Those born on or after July 1, 1996 may operate a boat legally **only if** they have been issued a “Boating Safety Certificate” and have it on board the boat.

## WHO MAY OPERATE A PERSONAL WATERCRAFT (PWC)

Those less than 14 years of age may NOT legally operate a PWC. Those 14 years and older see the “*Handbook of Michigan Boating Laws & Responsibilities*” for legal requirements. Those born after December 31, 1978 must have a “Boating Safety Certificate” and have it on board the PWC.

## ATONS (Aids to Navigation)

Red and Green Buoys:

When **going** out to Lake Michigan from Lake Macatawa, keep the **GREEN** buoys (ATONS) to the right side of your boat or personal water craft. When **returning** from Lake Michigan into Lake Macatawa keep the **RED** buoys (ATONS) to the right side of your boat or personal water craft. (Red Right Returning).

**BOATS 40 FEET OR MORE IN LENGTH** may not exceed 8 mph anywhere on Lake Macatawa.

## ALCOHOL and DRUGS

Michigan law prohibits anyone from operating a vessel while under the influence of alcohol or drugs. If your blood alcohol content is 0.08% or greater you are considered to be under the influence of alcohol.

## BOATING SAFETY CLASSES

The class mission is to minimize the loss of life, personal injury, property damage and environmental impact associated with the use of recreational vessels through preventive means. For information on the next class, see our Facebook, U. S. Coast Guard Auxiliary 31-04 Holland, MI.

## CHANNELS ON YOUR MARINE RADIO

Channel 9 – calling channel for recreational boaters  
Channel 16 – use for emergency or distress to Coast Guard.

Channel 22A – U.S. Coast Guard broadcasts of severe weather and other safety warnings.

**PLEASE WEAR A LIFE JACKET!  
IT COULD SAVE YOUR LIFE**

## VESSEL SAFETY CHECKS

A Vessel Safety Check (VSC) is a FREE check to boaters who want their vessel to meet all federal and state equipment requirements. Vessel Examiners performing this service have been trained to look for some of the more common problems, which might occur on vessels or their associated safety equipment. If the vessel has all the required items on board and are in good working order, the Vessel Examiner will award a VSC decal to affix to the vessel. To schedule an exam, visit [www.cgaux.org](http://www.cgaux.org). You can also stop a sheriff's vessel on the water and request a vessel safety check. They will gladly do this if not on a call.

# JOIN US!

## BECOME A VOLUNTEER WITH THE U.S. COAST GUARD AUXILIARY

We welcome your inquiry into becoming a member of the Auxiliary. We are a volunteer support group to the U.S. Coast Guard. We teach boating safety, conduct water patrols, provide free vessel exams, and raise awareness of safety and environmental issues relative to boating and the water. We assist our local Coast Guard in various operations where needed. Membership is open to all U.S. citizens, 17 years and older. Visit our Facebook page at US-Coast-Guard-Auxiliary-31-04 Holland MI.



Prepared by the U.S. Coast Guard Auxiliary Flotilla 31-04, Holland, MI. Any duplication, reproduction or copying will require permission from the Auxiliary.

2017

**New No Wake Zones**

# BOATING ON LAKE MACATAWA

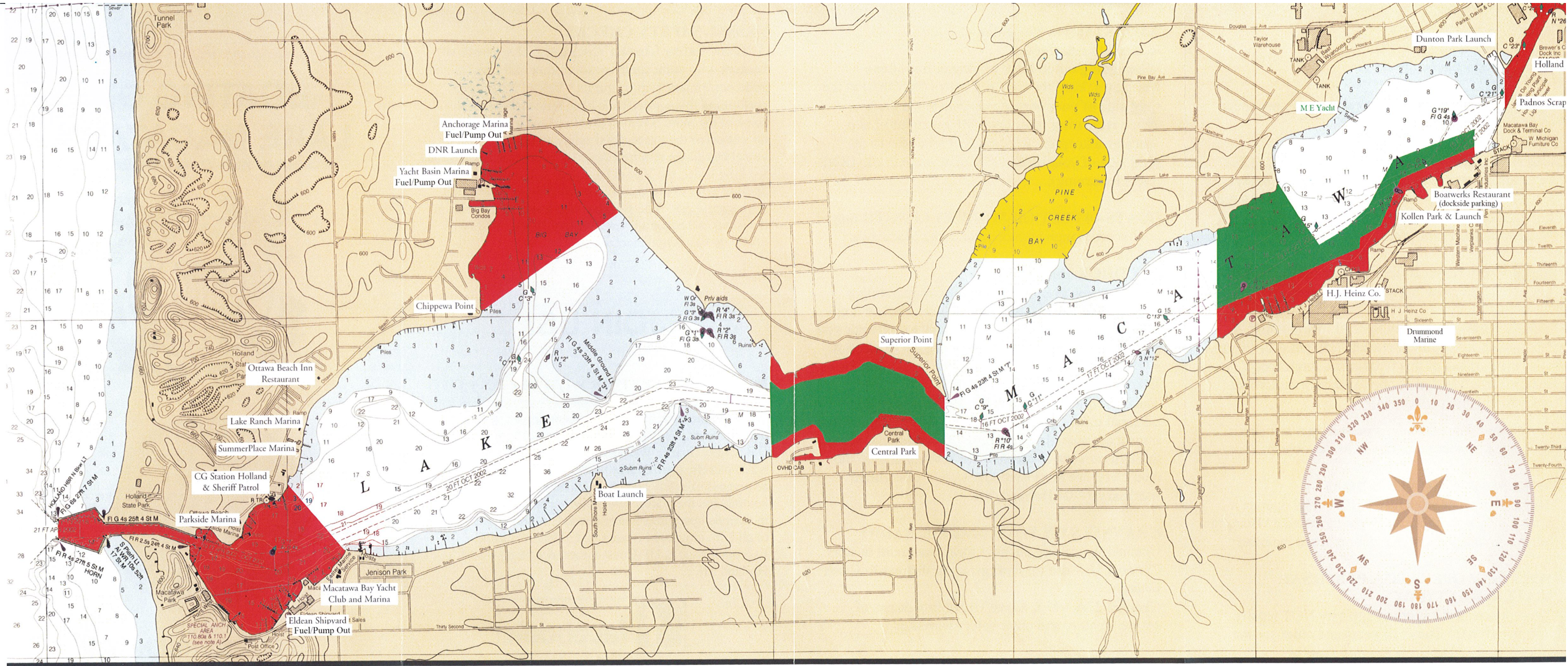
*Includes No Wake Zones and Landmarks*



**FOR EMERGENCY**

**Call 911  
or  
Marine Radio Channel 16**





# Lake Macatawa

## Holland, Michigan

Not intended as a navigation chart.  
This is for information purpose only.



### CAUTION

Charted submarine pipelines and  
submarine cable areas are shown as:

---  
*Pipeline Area*

~~~~~  
*Cable Area*