

SECTION 4

RECREATION
INVENTORY



HOLLAND CHARTER TOWNSHIP COMMUNITY PARKS AND RECREATION PLAN SECTION 4 EXISTING RECREATION INVENTORY

In order to determine the recreational needs for Holland Charter Township, an analysis of the existing facilities was undertaken. The intent of the analysis is to provide a clear evaluation of the strengths and weaknesses of the existing recreational opportunities the Township has to offer its citizens. The inventory is based on information provided by Township staff and site inspections carried out by MCSA Group as part of the planning process.

TOWNSHIP PARK AND OPEN SPACE FACILITIES

Holland Charter Township provides a range of passive and active recreation opportunities for residents within its Township Parks. There are five (5) parks that have existing recreational facilities on approximately 332.5 acres of public land. There are also several undeveloped green spaces in the Township's ownership.

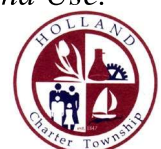
The Township properties can be classified as follows: two (2) neighborhood parks, three (3) community parks and two (2) natural resource areas. This classification is adapted from "Park, Recreation, Open Space and Greenway Guidelines," J. D. Mertes and J. R. Hall, 1995, as recommended by the Michigan Department of Natural Resources. A more detailed description and photographic inventory of each site follows. An Existing Recreation Facilities map at the end of this section illustrates the location of public park/recreation areas within the Township, and an Existing Recreation Facilities matrix provides a summary of the facilities provided at each location.

An Accessibility Assessment of each facility was undertaken using the following ranking system for the site elements based upon the 2010 Standards for Accessible Design:

- 1 - NONE
- 2 - SOME
- 3 - MOST
- 4 - ALL

5 - THE FACILITY MEETS THE PRINCIPALS OF UNIVERSAL DESIGN

Equitable Design, Flexibility in Use, Simple and Intuitive Use, Perceptible Information and Tolerance for Error, Low Physical Effort and Size and Space for Approach and Use.







NEIGHBORHOOD PARK

Neighborhood parks remains the basic unit of the park system and serves as the recreational and social focus of the neighborhood. This park typically serves a ¼- to ½-mile distance and uninterrupted by nonresidential roads and other physical barriers. A size of 5-10 acres is considered optimal for this type of park. The focus is on informal active and passive recreational activities, such as walking, field games, court games, playground equipment, and picnicking. Although slightly smaller, Holland Charter Township has two parks that fit this category.





Beechwood Park
343 Third Ave.
3.5 Acres

Beechwood Park is a three and a half (3.5) acre neighborhood park located on the north side of Lake Macatawa. It includes play equipment, six (6) pickleball courts, one (1) basketball court, ten (10) lighted shuffleboard courts, picnic facilities, and a parking area. There is also a small natural/woodland area and the Township's bike path system runs past the park. Significant improvements to Beechwood Park were completed in 2001.

Accessibility Rating: 3

Most surfacing and walkways meet ADA. The site features some accessible seating and ADA parking spaces. The play area does not offer accessible play opportunities.

Accessibility Improvements:

Barrier free play equipment should be added, and accessible walking trail connecting all use areas of the site.

Condition:

The overall park is in good condition but would greatly benefit from modernization and additional programming/activity spaces.





Brookwood Park
3091 Joy Dr.
1.0 Acres

Brookwood Park is a small neighborhood park located in the east central section of the township. The park is only one (1) acre in size and provides a shelter building, picnic facilities, play equipment, and an open playfield. Its use, because of its small size and location in stablished residential area, is limited to adjacent residents.

Accessibility Rating: 2

This park has no accessible parking or route into the play area. The wood fiber playground surfacing is worn and settled and not accessible in some areas. The shelter is also not accessible from either the lawn or play area.

Accessibility Improvements:

Consider adding new inclusive play equipment and ADA compliant playground surfacing. Update all pathways and amenities to be barrier free.

Condition:

The park needs updates. Play equipment, shelter building, and other facilities are aging and in structural decline.





COMMUNITY PARKS

Community-wide parks serve a broader purpose than neighborhood parks and provide a range of facilities and areas capable of supporting structured and unstructured community participation. These areas are typically between 30 and 50 acres in size and serve two or more neighborhoods and ½ to 3-mile distance. Facilities may include wooded or natural areas, picnic shelters and grills, bike or hiking trails and other semi-active and passive uses for large groups of people. They may also contain specialized recreational facilities such as swimming pools, community centers, and lighted ball diamonds. Community Parks should be easily accessible from throughout their service area. Currently there are two township parks classified within this category.





Howard B. Dunton Park
290 Howard Ave.
21Acres

Howard B. Dunton Park is the Township's only waterfront facility. Dunton has nearly twenty (20) acres of scenic area on the shoreline of Lake Macatawa in a mixed residential, industrial, and commercial area. It has three (3) play equipment areas, two (2) modern restroom facilities, picnic facilities with four (4) shelters, a beach area, over 2,000 linear feet of lakefront, decks, fishing piers, marsh land and launch ramp, and associated parking for approximately 140 cars and trailers. The safety surfacing was replaced at the upper playground in 2017 and significant improvements were made to the waterfront in 2018.

Accessibility Rating: 3

Not all areas of the park are ADA accessible. Newer play equipment does offer barrier free access and ADA parking spaces are provided.

Accessibility Improvements:

Improvements to trails provide additional access to waterfront. Updating old play equipment to allow for universal access.

Condition: There are several areas in parking lots where tree roots are causing tripping hazards. These lots should be resurfaced. The main picnic shelter needs new paint and has heaving concrete at its foundation. The wooden boardwalk requires new paint on its railing, the replacement of worn or damaged posts decking, and repairs to existing lighting to maintain safety. Existing picnic shelters should also include barrier free picnic tables. The retaining wall at the eastern playground needs repair and the play surfacing needs to be resealed.





Quincy Park
14025 Quincy St.
147.5 Acres

Quincy Park is located in the northwest corner of the Township. The area is characterized by traditional residential neighborhoods to the south and a residential/golf course development to the north. The 147.5 acres includes one (1) major league baseball field, multipurpose athletic fields, lighted softball diamonds, Little League fields, soccer fields, a fence enclosed dog park, a modern restroom/concession building, picnic shelters, playground equipment, and substantial number of parking spaces. The surfacing at the large playground was replaced in 2020.

Accessibility Rating: 4

This park has adequate ADA parking spaces and accessible routes to activity areas. The playground is modernized with accessible equipment.

Accessibility Improvements:

Currently, the park is well suited for visitors of all ability levels.

Condition: The park is well maintained, and all areas are widely used by the community. It is apparent that the township is dedicated to the continued up-keep and improvements at the park. There are a few locations in the various parking lots that require patching.





Helder Park
3751 104th Ave.
167 Acres

Helder Park is the largest of the Township Parks with 167 acres in the northeast section of the township, an area experiencing substantial residential growth. The current park facilities include lighted softball fields, modern restroom and concession building, picnic shelters, lighted tennis courts, sand volleyball courts, a basketball court, lighted and irrigated soccer fields with spectator bleachers, playground equipment, a dog park, parking, and woodland trails. The site has a natural wooded area and a stream, as well as open fields. In 2012, improvements were made to the park including the addition of an access drive from Quincy street with parking and a trail head, walking trails in a pedestrian bridge connection to the rest of the park.

Accessibility Rating: 4

This park has adequate ADA parking spaces and accessible routes to activity areas. The playground is modernized with accessible equipment and walking trails are ADA compliant.

Accessibility Improvements:

The park is well suited for visitors of all ability levels.

Condition: There is uneven concrete near the ball fields and the tennis courts need recoating. A bridge should be constructed where the trail crosses the stream to maintain safe site usage.





NATURAL RESOURCE AREAS

Natural resource areas are lands set aside for preservation of significant natural resources, landscapes, and open space. These sites are typically unsuitable for development but offer natural resource potential and can support recreational activities at a level that preserves the integrity of the natural resource. The location and size of these parks are largely governed by availability.

The Township has two such facilities, both part of the Macatawa Greenway Network. A 19-acre parcel of wetland west of U.S. 31, on the south side of the Macatawa River. This is an important marshland habitat and adjoins an additional parcel of land owned and managed by the Wetland Foundation. It has potential for future development of the Macatawa Greenway trail.





Hawthorn Pond Natural Area
9876 Black River Ct.
40 Acres

Hawthorn Pond Natural Area, jointly owned with Ottawa County, is a forty (40) acre parcel in the southeast corner of Holland Township east of I-196. The land is located within the 100-year floodplain along the Macatawa River and includes a 5 to 6 acre borrow pit lake and large areas of woodland. Improvements added in 2011 included an asphalt entrance drive and 10 space parking lot, fishing deck, kayak launch, .5-mile path around the 5-acre pond, and two (2) fishing landings with benches.

Accessibility Rating: 4

This site has been updated with accessibility in mind and includes ADA parking & walking trails.

Accessibility Improvements:

Any future development should continue to comply with barrier-free requirements.

Condition: This natural area is currently in good condition. Recent additions and amenities continue to make this site a usable natural space for area residents.





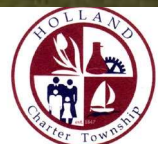
LINEAR PARKS AND PATHWAYS

Township Bike Paths

Holland Charter Township has developed approximately 70 miles of bike paths and sidewalks along many of its major roadways. These paths tie into those developed by the adjacent local governmental units of Holland and Zeeland cities and Park and Zeeland Townships. The paths allow residents the opportunity to travel to many of the regional recreational facilities along the coast of Lake Michigan, as well as simply to enjoy walking and biking in safety. Development of the system is continuing, with the addition of a new section on Quincy Street (120th Ave- Westshore Drive) in 2020.

Macatawa Greenway

The Macatawa Greenway Partnership is a private non-profit organization formed in 1995 whose mission statement is to “*preserve and connect open and green spaces, streams, and natural lands to create greenway corridors to benefit people and wildlife in the Holland/Zeeland area, developing recreational opportunities along these greenway corridors where appropriate*”. The partnership has developed a master plan to construct a trail system along the Macatawa River from Windmill Island to Paw Paw Park, and has plans to further extend the trail/park network in the area with the cooperation of local townships, the Township of Holland and Ottawa County Parks. Holland Charter Township constructed a portion of the bike path/trail from Lakewood Boulevard along the north bank of the Macatawa River in 2003 and is highly supportive of efforts to further expand the system in the future.





DNR Recreation Grant Inventory

Holland Charter Township has been fortunate to receive a total of sixteen (16) grants through the Michigan Department of Natural Resources over the last 35 years. The grants assisted with acquisition and development of park property at Dunton, Helder and Quincy Parks.

The most recent grant funded projects include the expansion of facilities at Howard B. Dunton Park in 1997. This including new parking area and entrance drive, site lighting, boardwalks and overlook decks, restroom and storage building, group picnic shelter, site furniture, fencing, shoreline riprap, and landscaping. In 2000, the Helder Park Development project included many of the core park facilities, including a new play area, group picnic shelter, restroom building, basketball court, two (2) tennis courts, two (2) sand volleyball courts, walkways, and landscaping. In 2003, a substantial grant from the Land and Water Conservation Fund resulted in the construction of four (4) new Little League Fields with lighting and irrigation, new access drive and parking, restroom and concession building, walkways, site amenities and landscaping. In 2009, Helder Park Improvements included development of a new entrance drive and parking area, walking trails, wetland boardwalks, a pedestrian bridge and overlook deck, renovations of existing softball fields, and a sidewalk to 104th Avenue. In 2012, Helder Park Improvements included an access drive from Quincy Street with 15 parking spaces, a trailhead, a connecting asphalt pathway system, and a bike/pedestrian bridge over Noordeloos Creek. The addition of a shade shelter and renovation of two (2) existing softball fields were also included in the 2012 improvements. All the above improvements are in good condition and are well used by the community.

In 2016 Howard B. Dunton Park received a Trust Fund Grant for a new restroom building, playground, floating fishing pier and kayak launch.

An itemized Recreation Grant History is provided in this plan.

Accessibility Assessment

As part of the Recreation Inventory, M.C. Smith and Associates completed a review of the accessibility of each of the Township's recreation facilities using the ranking system recommended by the Michigan DNR. The following table summarizes this assessment and improvements needed to bring the parks in line with the Americans with Disabilities Act Accessibility Guidelines (ADAAG).





SCHOOL FACILITIES

Holland Charter Township is served by West Ottawa School District in the west and Zeeland School District in the east. The following school facilities are located within Holland Charter Township.

WEST OTTAWA SCHOOL DISTRICT:

Great Lakes Elementary School is adjacent to the high school campus in Park Township. The school has two (2) basketball courts, play equipment, an open unimproved play area with soccer goals for general school use, and two (2) softball fields.

Lakeshore Elementary School has two (2) all stone dust ballfields, a youth soccer field, youth basketball and court games.

Lakewood Elementary School has two (2) stone dust ballfields, two (2) youth soccer fields, multiple playgrounds, and basketball courts.

North Holland Elementary School is on New Holland Street at the northern limit of the Township in an essentially rural area, on ten (10) acres of land. It provides for parking, play equipment, open field play with two (2) soccer fields, one (1) softball diamond, and two (2) basketball courts.

Pine Creek Elementary School is part of the Middle School complex and provides three (3) new softball fields, a recreational-size soccer field, an attractive play area, two (2) basketball courts, and a new gym.

Sheldon Woods Elementary School has one (1) stone dust ballfield, one (1) open field, one (1) soccer field and multiple playgrounds.

Waukazoo Elementary School has one (1) stone dust ball field, one (1) youth soccer field and multiple playgrounds.

Woodside Elementary School has two (2) stone dust fields, six (6) youth soccer fields, multiple basketball courts and playgrounds.

Harbor Lights Middle School occupies the former site of West Ottawa High School (now in Park Township) on 138 acres in the northwest area of the Township. There are seven (7) tennis courts, two (2) football fields, four (4) softball fields, two





(2) baseball fields and four (4) practice soccer/football fields, as well as parking. The school has a gym, auditorium, and indoor pool.

Macatawa Bay Middle School is a part of the Harbor Lights and Pine Creek Elementary site and provides two (2) softball diamonds, four (4) basketball courts, ten (10) tennis courts, three (3) soccer fields, play equipment and school parking.

West Ottawa High School has two (2) baseball fields, two (2) softball fields, a track and football field, a practice field, basketball courts, and twenty (20) tennis courts.

ZEELAND SCHOOL DISTRICT:

Adams Elementary School is located on Adams Street in Zeeland Township and has a softball field, three (3) youth soccer fields, basketball, playgrounds and stage area.

Lincoln Elementary School has softball, two (2) youth soccer fields, and playgrounds.

New Groningen Elementary School is located in Holland Charter Township just west of the Zeeland City limits on Chicago Drive. It is a 12-acre site containing four (4) basketball courts, one (1) soccer field, two (2) little league ball fields, some play equipment and parking.

Quincy Elementary School located on the north side of Quincy Street, east of Helder Park, opened in 2003. Facilities include three (3) basketball courts, one (1) softball field, one (1) soccer field, play equipment and an open play field on a 15-acre site.

Roosevelt Elementary School is located on the campus of Creekside Middle School.

Woodbridge Elementary School has three (3) softball fields, an open field, court games and playgrounds.

Cityside Middle School has no outdoor sports facilities but shares a campus with the Zeeland Recreation Center.

Creekside Middle School is located on a 70-acre parcel of land on the border of Holland Township and Zeeland City. This area also includes the football stadium complex with seating for 4,000, parking for 750 and restrooms. The stadium





and school sites combined have eight (8) tennis courts, four (4) irrigated softball fields (one lit), eight (8) soccer fields, eight (8) basketball courts, and two (2) little league fields. The school sites also have nature trails and two (2) playgrounds. Indoor facilities consist of two (2) gyms at the Middle School.

Zeeland High Schools (East and West) provide two (2) softball fields, a track, twelve (12) tennis courts, three (3) baseball fields, one (1) basketball court, five (5) football fields, three (3) soccer fields and a range of indoor facilities. The high schools, which occupy a 75-acre site, are also linked to the football stadium by an underpass at Riley Street.

Venture Academy shares a campus with Zeeland West High School.

The following parochial and charter schools are also located in the Township:

Corpus Christi Catholic School, located on Quincy Street, has two (2) basketball courts, one (1) soccer field, one (1) softball field, and play equipment. In addition to the above-mentioned facilities, all the schools have multi-use gymnasiums, which provide many types of organized, as well as general, activities for both the school district and the residents of the Township. Play equipment for lower age group use is available at most school sites and ranges in terms of age and quality of play value provided.

Rose Park Christian School is located adjacent to North Shores Middle School at the intersection of Butternut and James. This site is about five acres in size and is nearly completely developed with three basketball courts, a softball field, four soccer fields, four tennis courts and play equipment.

Eagle Crest Charter Academy has basketball courts, a soccer field and a playground.

COMMERCIAL / PRIVATE FACILITIES

Holland Charter Township has growing commercial enterprises offering a variety of local and regional recreational opportunities. Increased growth in the Township has stimulated this sector of the recreational market, creating several new businesses. It is anticipated that more growth in the commercial recreation area will continue over the next decade in response to demand.





Craig's Cruisers is a family fun center located at the intersection of Chicago Drive and 120th Avenue. Activities include go-karts, bumper boats, batting cages, game room, mini-golf and a private outdoor pavilion and picnic area.

Drew's Country Camping offers 86 modern campsites, swimming pool, ballfield, and playground in the north of the Township.

Griffs Ice House West indoor ice rink is located on Ransom Street and provides two (2) rinks, as well as a weight/cardio room.

Fitness Centers: there are currently five fitness centers located in the Township. Anytime Fitness, 977 Butternut Drive; Fitness Together Lakeshore, 3155 West Shore Drive; Planet Fitness, 12330 James Street; Snap Fitness, 12059 Felch Street, Girlfriends Gym, 2975 West Shore Drive.

Holland Fish and Game Club has 10 acres with facilities available for special events. It also offers programs such as Hunter's Safety, which are open to the public.

The Lost City is a family indoor entertainment center featuring laser tag and a games room and is located south of Westshore Mall.

Northland Lanes offers ± 10 alleys and a Game Room in the southwest area.

Ridgepoint Community Church owns a large parcel of land bounded by Adams Street and 104th Avenue in the southeastern corner of the Township.

The property, which borders the Macatawa River, is available for hiking and wildlife viewing on an informal basis.

The Soccer Stop, located in the southern area of the Township, offers indoor soccer facilities, baseball and softball batting cages, arcade area, meeting, and party room as well as two (2) outdoor fields. It supports indoor and outdoor leagues for youth and adult soccer and other sports.

Sundae Golf is available at the intersection of Lakewood and 120th Avenue.

Sportsquest is located just west of the Zeeland West High School complex.





Boys and Girls Club is located at the intersection of Riley Street and Butternut Drive. This facility provides indoor youth activities and programs.

GOLF COURSES

There is one golf course currently located within the Township limits.

Macatawa Legends Golf Course and Country Club is a private 18-hole championship course with clubhouse, practice range, putting greens, golf shop, tennis courts, outdoor family aquatic center and fitness center. It is located immediately north of Quincy Park and extends west across 144th Avenue into Park Township.

Golf opportunities in the surrounding area are summarized as follows:

Crestview Golf Course (Open to Public) 18 holes
90th Avenue, Zeeland

Pheasant Run Golf Course (Public) 9 holes
Port Sheldon Street, Zeeland

Pigeon Creek (Public) 18 holes
10195 120th Avenue, West Olive

Rolling Meadows 9 holes golf course and condominium development 48th St., Holland

Winding Creek Golf Course (Public) 27 holes
8600 Ottagon Street, Holland

West Ottawa Golf Course (Public) 27 holes and practice range
6045 136th Avenue, Holland

Wuskowhan Players Club (Private) 18 holes
Blair Street, Port Sheldon Township.

The following map and matrix illustrate the location and amenities available at the existing public, quasi-public and commercial recreation facilities in Holland Charter Township.





ADJACENT MUNICIPAL AND TOWNSHIP FACILITIES

Holland Charter Township is bordered to the north and east by several rural Townships, which have no recreational facilities of any size or special significance for neighborhood/community use.

To the south Holland Charter Township borders the City of Holland and provides a range of facilities. The Matt Urban Sports Complex is available within the Township limits along 32nd Street. This facility provides four (4) softball fields, one (1) soccer field, basketball, sand volleyball, play areas, and parking. There is also a special-use facility, VanRaalte Farm, located off 16th Street just beyond the Township boundary. This is a historical/educational exhibit with running and cross-country ski trails. Paw Paw Park (West) is an Ottawa County Park that located along the south banks of the Macatawa River, with hiking trails, picnic facilities, fishing, and kayak access. Window-on-the-Waterfront provides a linear walkway along the south banks of the Macatawa River.

Another significant neighboring recreational facility is **Huizenga Park** South of BL-196 within the City of Zeeland limits. This 27-acre park contains several ball fields, pickleball courts, parking, picnicking, play areas and a new skate park.

Wendt Park, near the central eastern border of Park Township, covers approximately 17 acres and offers a basketball court, softball field, tennis courts, pickleball courts, bocce ball, soccer field, picnic area, playground, and fitness course. This park is used for some of the Holland & Park Township Recreation Programs.

COUNTY REGIONAL FACILITIES

There are several county and regional facilities and public lands that provide for the recreation needs of Holland Charter Township residents. The Ottawa

County Parks and Recreation Commission manages the following facilities within a ten-mile radius of the Township.





Adams Street Landing in the south of Holland Charter Township providing parking area and a river access point for anglers and kayakers to the Macatawa River. The site is envisioned as a staging area for bicyclists riding the future greenway trail.

Paw Paw Park (East and West) has two entrances located at 1230 Paw Paw Drive (East Entrance Formerly named Macatawa Greenspace) and 1099 Paw Paw Drive in Holland (West Entrance). This 172-acre park (with the 2015 addition of 50 acres of adjacent leased park property from the City of Holland) has two distinct and unique properties connected by a portion of the regional bike path known as the Macatawa Greenway Trail. The east-122 acres of the park is the site of the former Holland Country Club, a golf course that served the Holland area for many decades. The property was acquired by the Ottawa County Parks and Recreation Commission in March of 2010. Since the purchase, the site has gone through a dramatic transformation, converting the manicured golf greens and fairways to a mosaic of restored native habitats and park improvements.

The park encompasses the union of the Macatawa River and the Noorderloos Creek. The restored wetland is a birders delight, home to many waterfowl including Great Blue Herons. The bridges, boardwalks and observation decks take you beside the river, offering treasured, scenic views of the natural world within the City of Holland. Enjoy a game of disc golf or explore the park via foot or bike on paved and natural surface trails. During the winter months, appreciate winter serenity in snowshoes or cross country skis.

Park Amenities include: 18 hole disc golf course, rustic toilets, picnic tables, grill near picnic shelter (west area), half mile of paved trail, natural surface hiking and ungroomed cross country skiing trails, scenic overlooks, bridges and boardwalks and paved parking lot. All facilities except hiking trails are universally accessible.

Spring Grove Park has 16 acres in Jamestown Township that offers picnic facilities, including a fully enclosed Picnic Building, a flowing spring and small natural area, and a trellis constructed in 2000 designed for outdoor weddings and other ceremonies.

Pigeon Creek Park is 282 acres with another 150 adjacent acres of County Open Space land, located in Olive Township. It has over 10 miles of trails through woodland and along the Pigeon River for hiking, biking, and equestrian use. A group camp area available for use by recognized organizations. During the winter, this park is a popular cross-country ski destination and a sledding hill is also provided. Three miles of ski trails and the sledding hill have lights for night use. The Pigeon Creek Lodge provides ski rental, a





food and beverage concession and serves as a warming house (open limited hours).

Kirk Park consists of 68 acres of sandy beach, high bluffs, and wooded dunes on the Lake Michigan shoreline in Grand Haven Township. This park offers a reservable lodge and picnic shelter, swimming beach, limited play equipment and natural trails with a lake overlook deck.

Tunnel Park is a 22-acre park also situated on the shores of Lake Michigan, in Park Township. In addition to the unique tunnel through a dune, this park has a children's playground complete with a dune climb and a dune stairway with scenic views of Lake Michigan, as well as swimming and picnicking opportunities.

Hemlock Crossings/Pine Bend is 239 acres of woods and wetlands along the Pigeon River in Port Sheldon Township just west of US 31. Facilities include two small picnic shelters, a kayak/canoe launch, over a mile of paved trail and over 6 miles of trails for hiking and cross-country skiing. A pedestrian bridge and numerous overlooks offer scenic views of the river corridor, wetlands, natural springs, and woods. Pine Bend is a secondary access on the west end of the property that offers parking and a trailhead. Future plans include the development of a Nature Center at this site.

The Upper Macatawa Conservation Area, located in Zeeland Township, includes 576 acres along the Macatawa River. The site offers passive recreation opportunities while recognizing the value of the site for water quality improvement, flood water storage and wildlife habitat enhancement. Recent improvements include parking areas on 84th and 76th Avenues as well as the development of footbridges, picnic areas and overlooks. Trails for hiking and cross-country skiing, including a section of paved trail that will be part of the future Macatawa Greenway trail system is also complete.

In addition, there are two State Parks in the region, offering additional recreation opportunities and facilities for Holland Charter Township residents.

Holland State Park is located eight miles west of Holland. It offers an expansive, sandy beach along Lake Michigan and two large modern campgrounds with 342 sites. The park is divided into two separate units: one along Lake Michigan and the other along Lake Macatawa. A day-use area has picnic facilities, playground equipment, a toilet





building, and a beach shelter and concession. The beach day use area of the park is open all year round.

Saugatuck Dunes State Park is a day-use park along Lake Michigan, offering 1,000 acres of land with two- and one-half miles of shoreline. In addition, the park has fresh water coastal dunes that are over 200' tall. The park's terrain varies from steep slopes to rolling hills. The park, located in Allegan County, is relatively undeveloped, with a picnic area, swimming beach and hiking trails. In the winter there are 13 miles of un-groomed trails for cross-country skiers. Other State Land in the vicinity includes the **Allegan State Game Area**, which is located within 10-20 miles of the Township. This covers 50,000 acres of public land; providing hunting, fishing, rustic and group camping, hiking, equestrian, snow-mobile, and cross-country ski trails.

The surrounding urban areas of Holland, Grand Rapids and Grand Haven also offer significant regional facilities to area residents.



(4) SOCCER FIELDS

BASEBALL FIELD

SHADE STRUCTURE

PARKING AREA

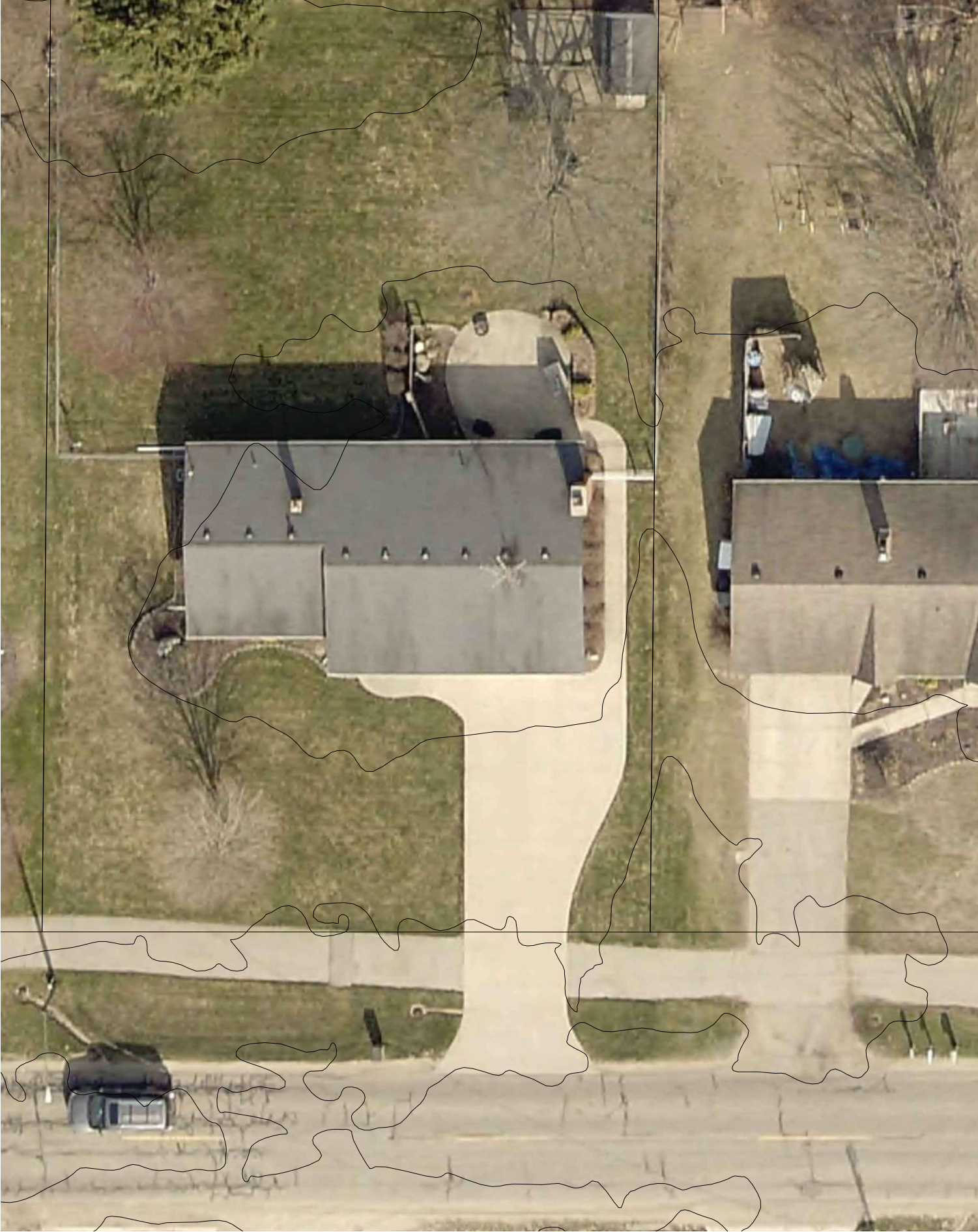
PEDESTRIAN BRIDGE

PLAYGROUNDS





ZONED:
SINGLE FAMILY
RESIDENTIAL



DOUGLAS AVE.

ZONED:
GENERAL
COMMERCIAL

VAN DYKE ST.



EXISTING BUILDING

**IMPROVED PARKING WITH 6
BARRIER FREE SPACES**

**40' WATERFRONT PICNIC/VIEWING
SHELTER WITH 5 PICNIC TABLES**

SHADE TREE IN GRATE

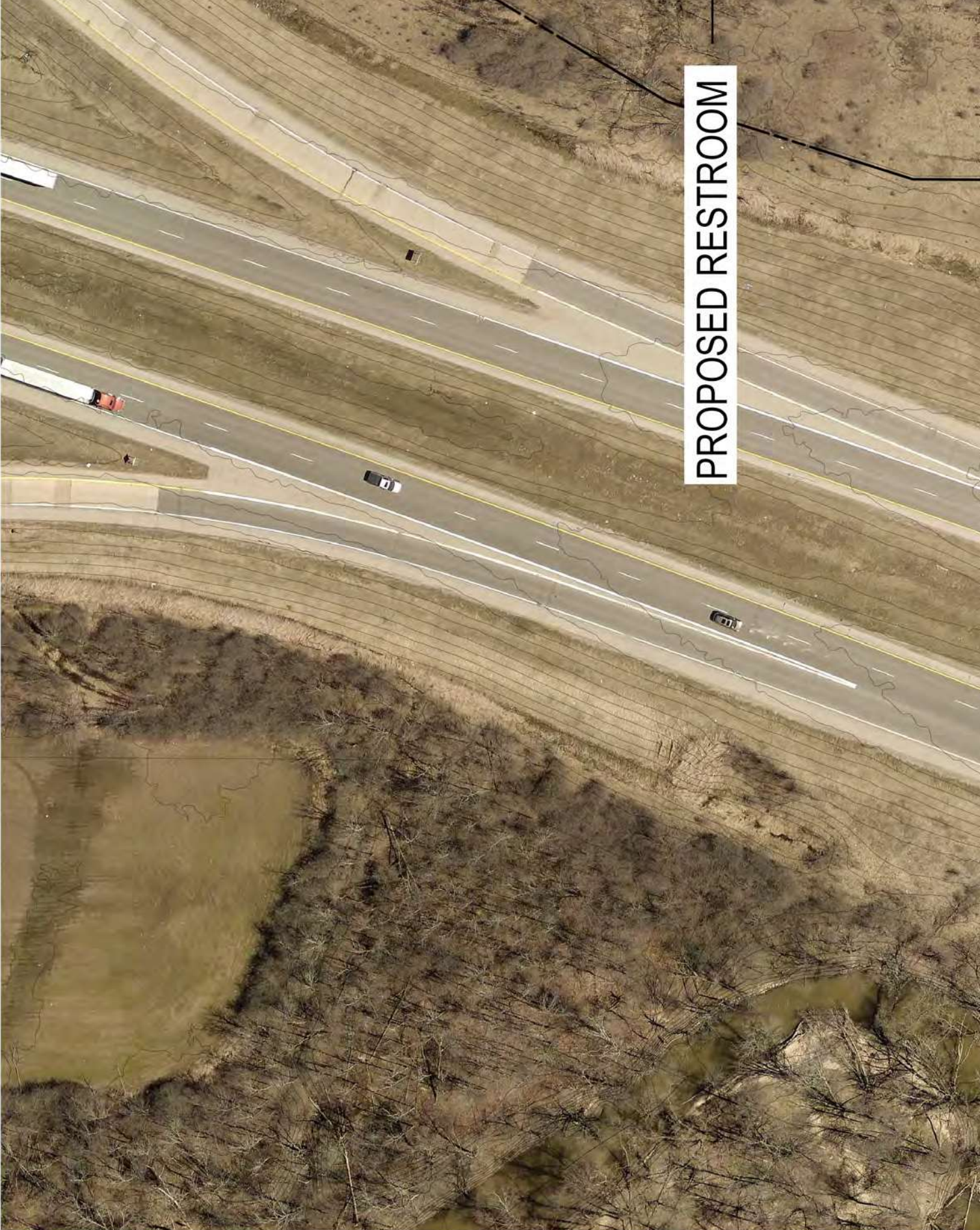
CONCRETE STEPS

**RESTROOM BUILDING
WITH KAYAK OFFICE**

**KAYAK STORAGE
BUILDING**



PROPOSED RESTROOM





PARKING AREA

PLAYGROUND

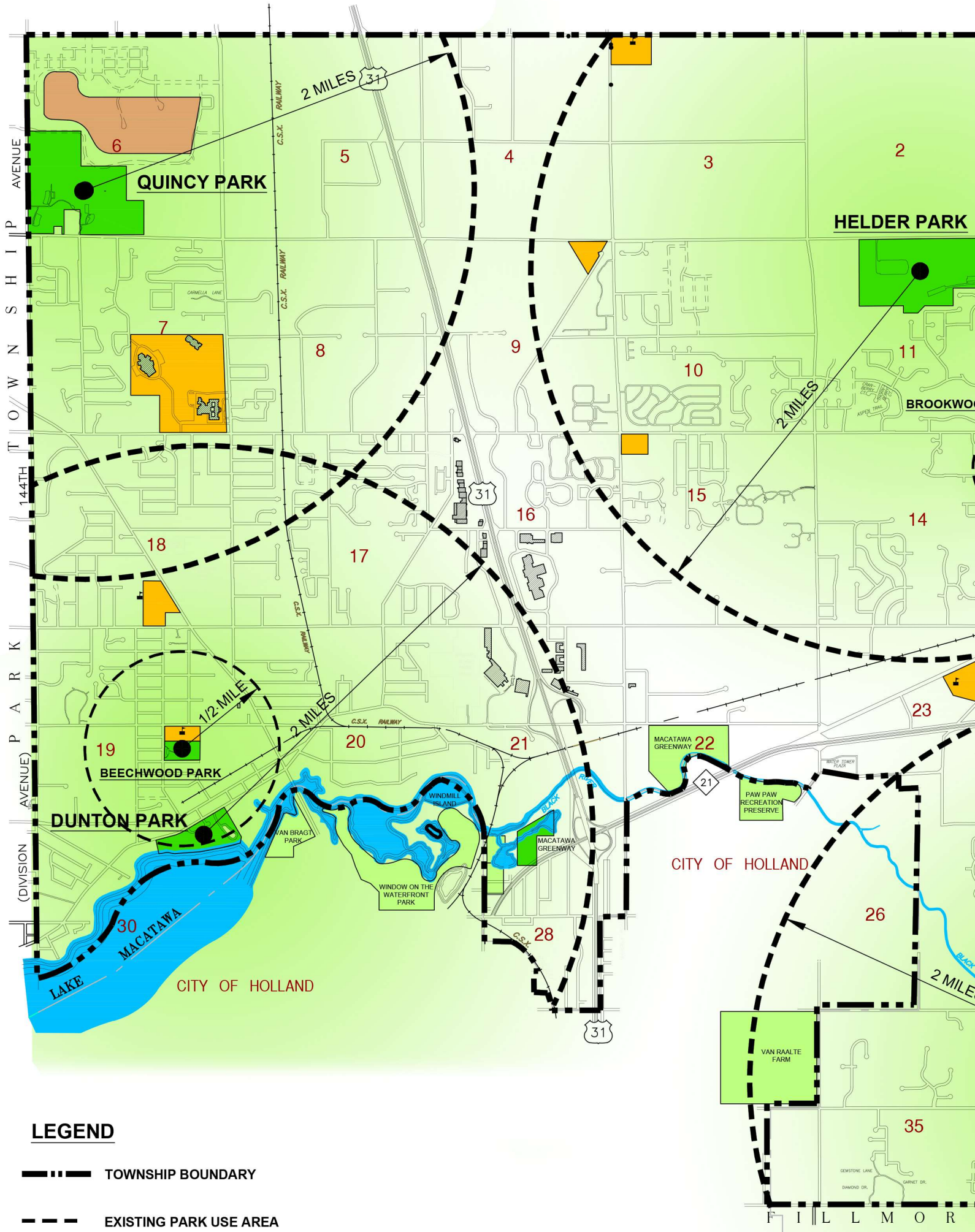
JIM KAAT BALL PARK
(3) LITTLE LEAGUE FIELD

PROJECT LIMITS

PARKING AREA

TRAILHEAD

PEDESTRIAN
BRIDGE



			Amenities					
		Acres	Parking	Public Restrooms	Concession / Maint. Bldg.	Pavilion	Picnic Shelter	Benches
PUBLIC PARKS			✓	1	✓			✓
	Beechwood Park	3.50						✓
	Brookwood Park	1.00					1	✓
	Hawthorn Pond Natural Area	40.00	✓	1			1	✓
	H.B. Dunton Park	21.00	✓	2		1	4	✓
	Helder Park	167.00	✓	2	✓	1	4	✓
	Quincy Park	140.00	✓	✓	✓		4	✓
SCHOOLS								
	Great Lakes Elementary		✓	✓				
	Lakeshore Elementary		✓	✓				
	Lakewood Elementary							
	North Holland Elementary	10.00	✓	✓				
	Pine Creek Elementary		✓	✓				
	Sheldon Woods Elementary		✓	✓				